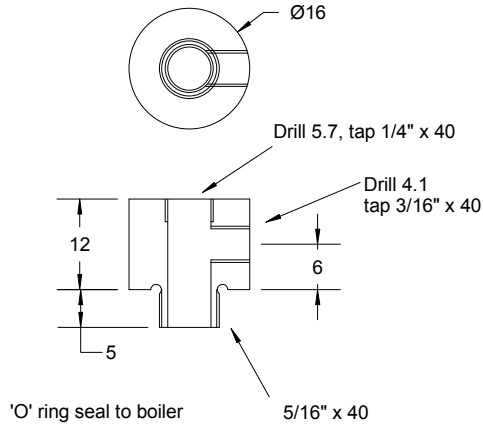
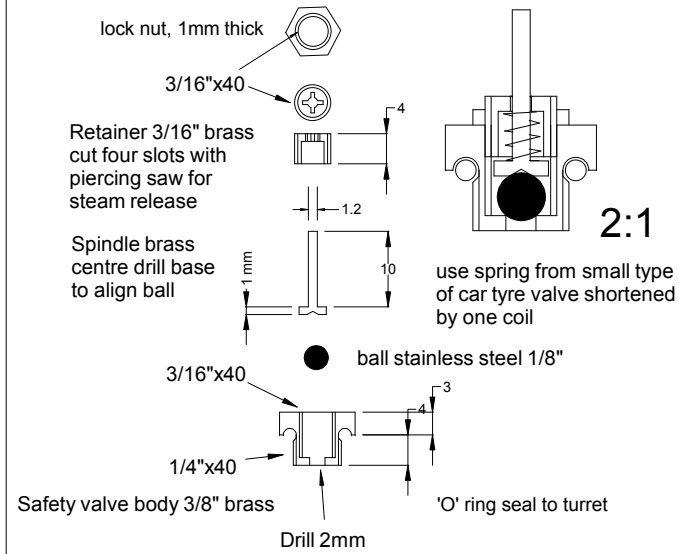


Turret

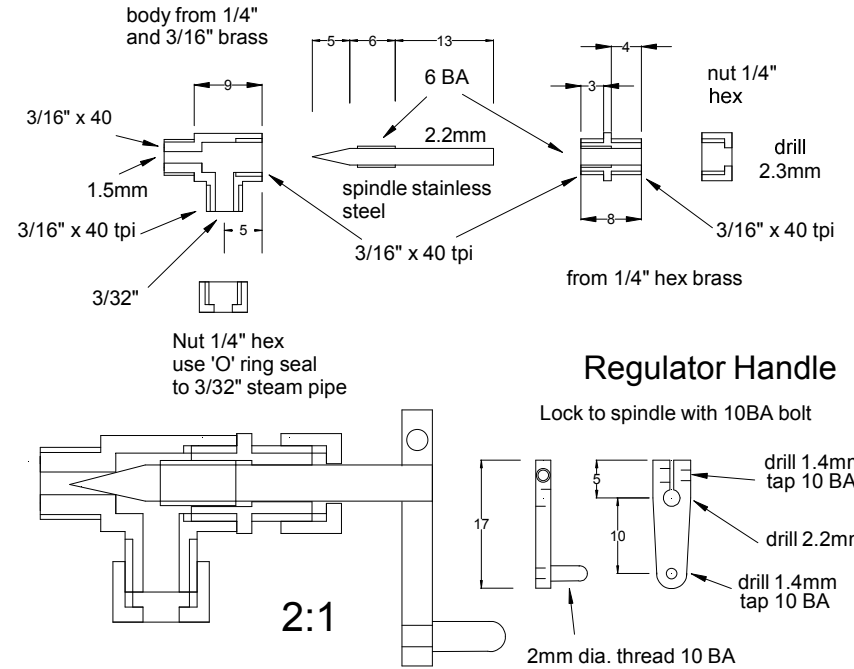
16mm dia. brass



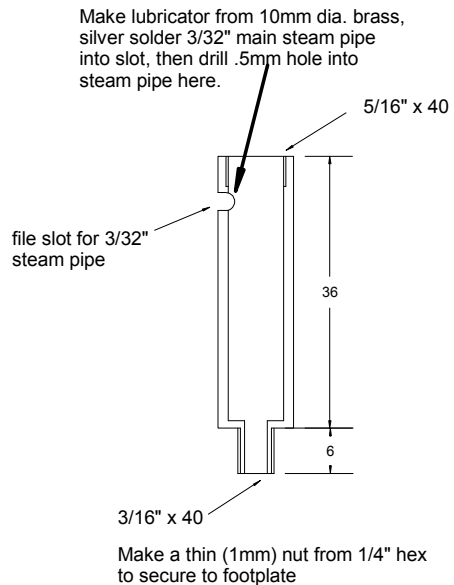
Safety valve



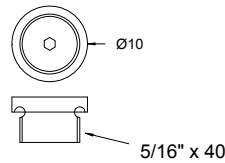
Regulator



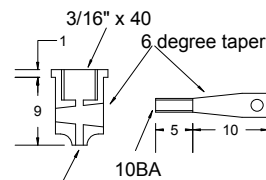
Displacement lubricator



Lubricator cap suggest make hex socket and use hex key to remove
O' ring seal to lubricator



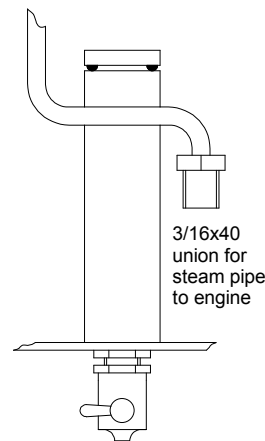
Lubricator drain valve from 1/4" hex brass



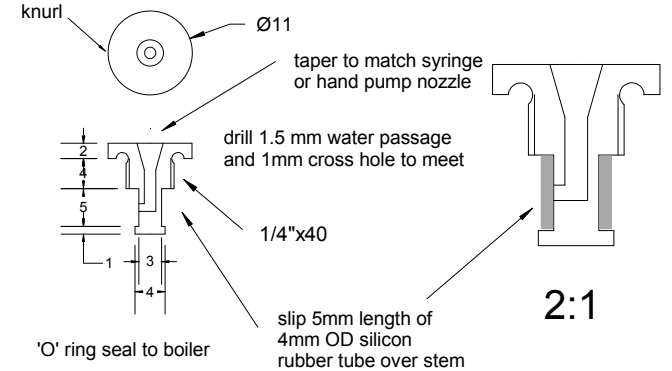
drill 1mm right through after inserting plug cock

Plug cock from 1/8" brass retain with short spring and 10BA nut.
Make handle from 1/16" brass rod

steam pipe from regulator see pipe layout drawing for shape



Boiler filler valve



Bagnall Brick 210/1879
16mm scale,
modified to 32mm gauge

Boiler Fittings and Lubricator
Copyright Dave Watkins 21/2/2011