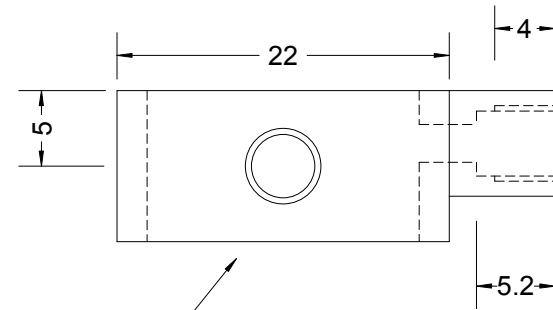
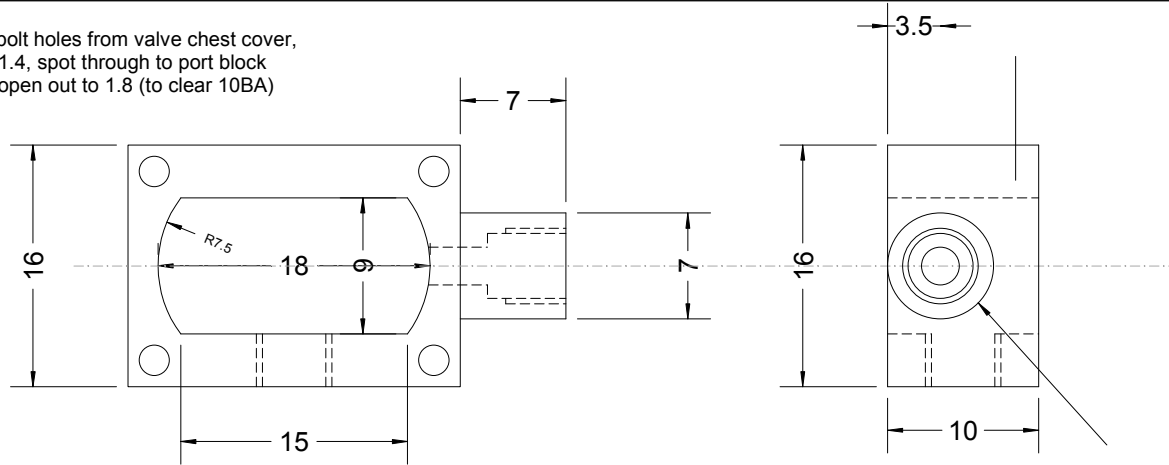
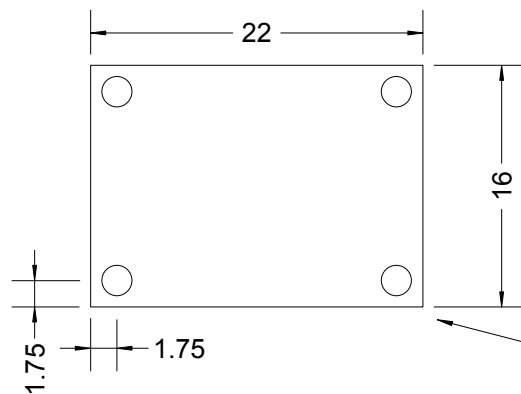


Locate bolt holes from valve chest cover,
drill 1.4, spot through to port block
then open out to 1.8 (to clear 10BA)



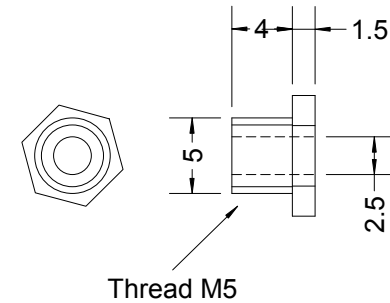
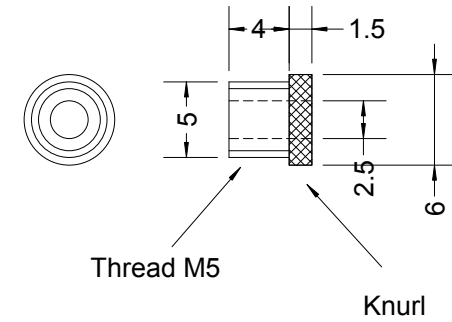
Steam inlet, drill 4.1,
thread 3/16"x40

Valve chest, brass
(1 off right hand as shown, 1 off opposite hand),
Scale twice full size



Valve chest cover (2 off), 1.5mm brass
Scale twice full size

Drill 1.4, spot through to valve chest
then open out to 1.8 (to clear 10BA)



Piston rod and valve rods glands (4 off),
Phosphor bronze, 6mm round or hex
Scale twice full size

Wild Rose III
sheet 10
Valve chests

Copyright Dave Watkins 13/3/2012