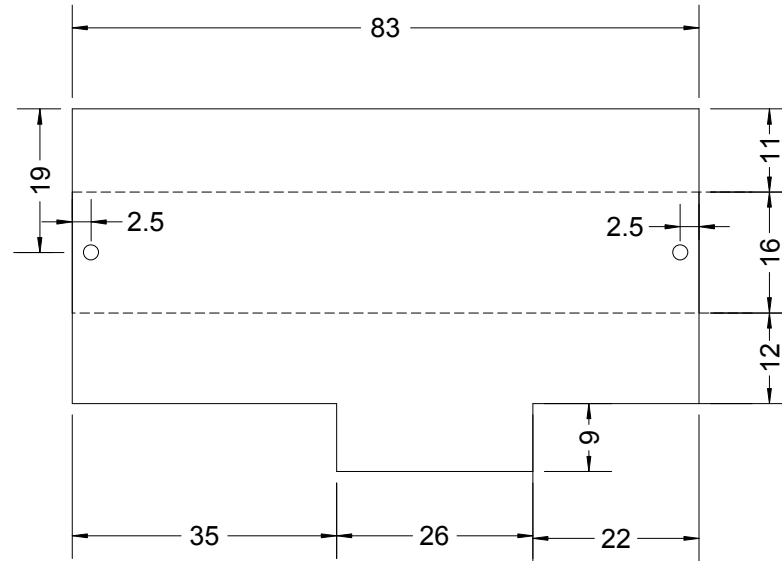
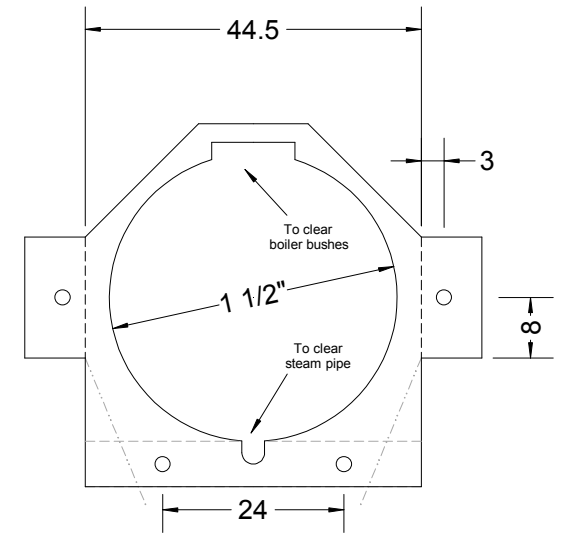


Front flameshield
Dotted lines show positions of frame spacer
and angle of side flame shields
Bolt to frame spacer



Side flame shields (2 off, 1 each hand)
Arc cutouts are to clear wheels
All fixing holes 1.8mm to clear 10BA
Bolt to front and rear flame shields

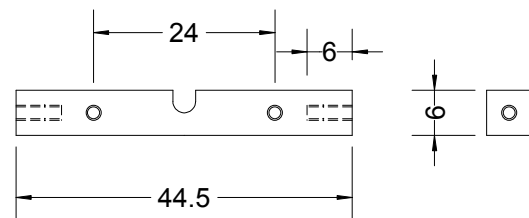
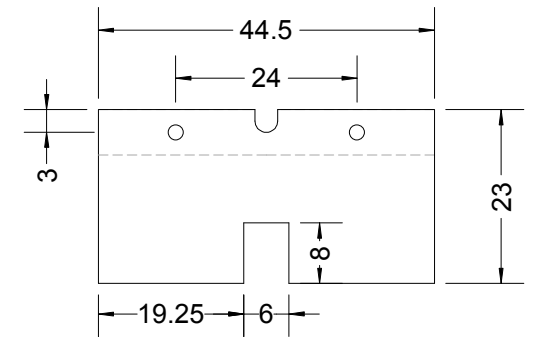
Flameshields can be thin brass or steel sheet.
Thickness is not critical, say 0.5mm or 24 SWG.



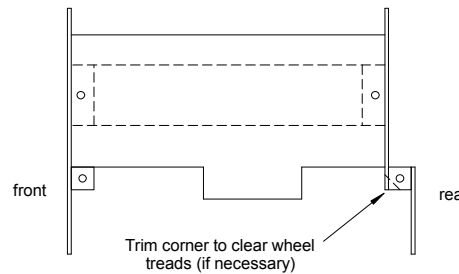
Upper rear flame shield

Dotted lines show positions of frame spacer
and angle of side flame shields
Bolt to frame spacer

Lower rear flame shield



Frame spacer (2 off), 6mm square
mild steel or brass
Drill holes 1.4, tap 10BA
Central notch 3mm deep to clear steam pipe



Assembled flameshield and
frame spacers
half full size

Wild Rose III sheet 14 Boiler supports and flameshields (meths fired version)

Copyright Dave Watkins 12/4/2013