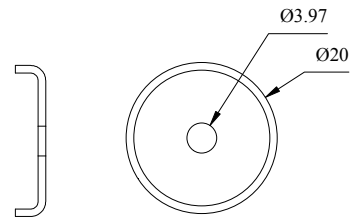
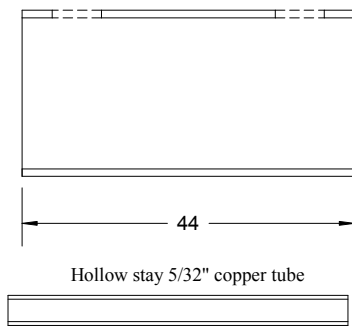
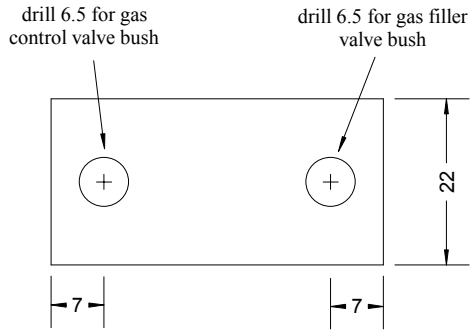


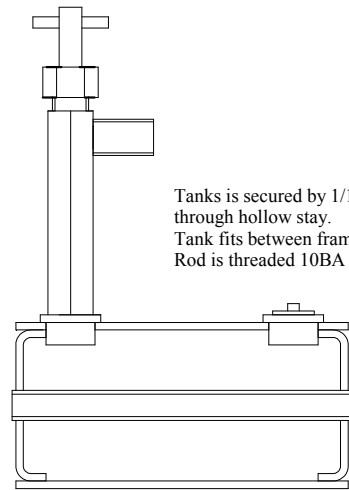
Alternative Gas Tank positioned below footplate

Tank 44mm length of 22mm copper tube,
copper end caps, all joints silver soldered

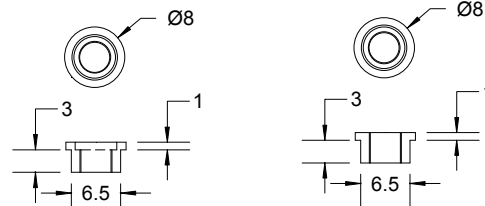


Tank ends 1mm copper disc 28mm diameter,
flanged to fit into tank and silver soldered.

Note - tanks ends could be plain turned brass
discs, of about 3mm thickness.



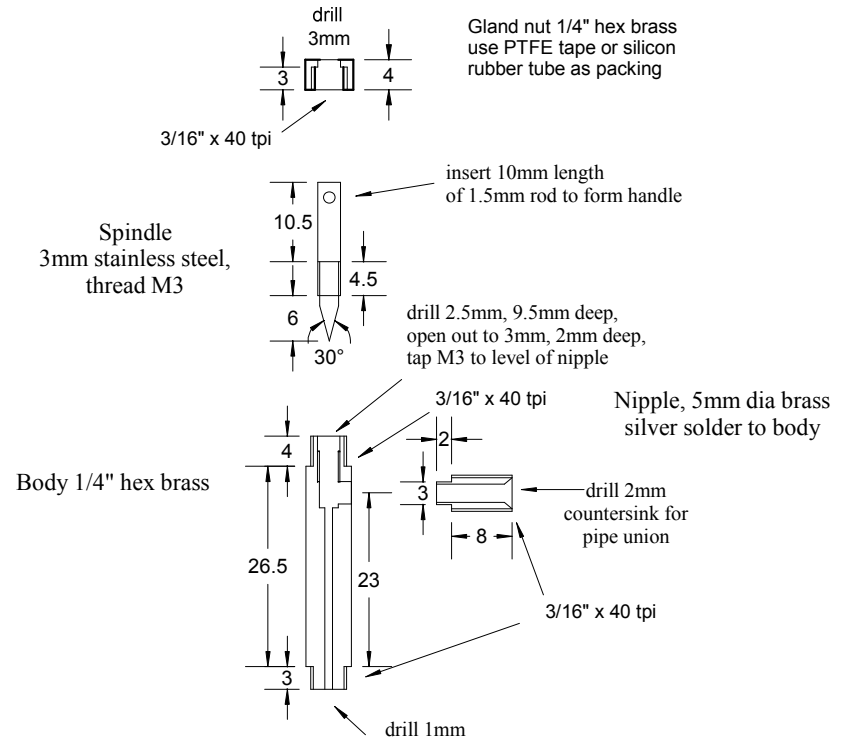
Tanks is secured by 1/16" rod,
through hollow stay.
Tank fits between frames at rear.
Rod is threaded 10BA at each end.



Gas filler valve bush,
threaded to match
commercial filler valve
(recess 5.5mm dia, 1mm deep,
drill 4mm, thread 4.5mmx0.5mm
for Ronson filler valves)

Gas control valve bush,
drill 4.1, tap 3/16x40

Gas Control Valve



Wild Rose III
sheet 23
Alternative gas tank (below footplate)

Copyright Dave Watkins 21/5/2013