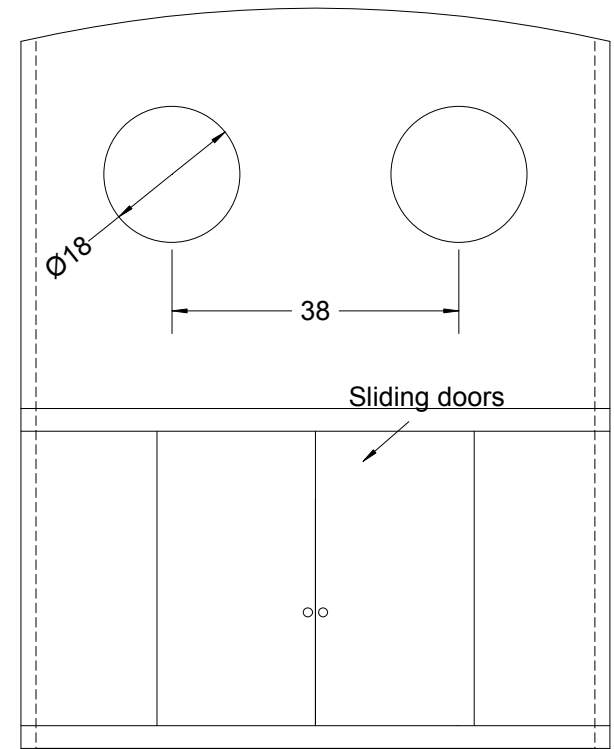
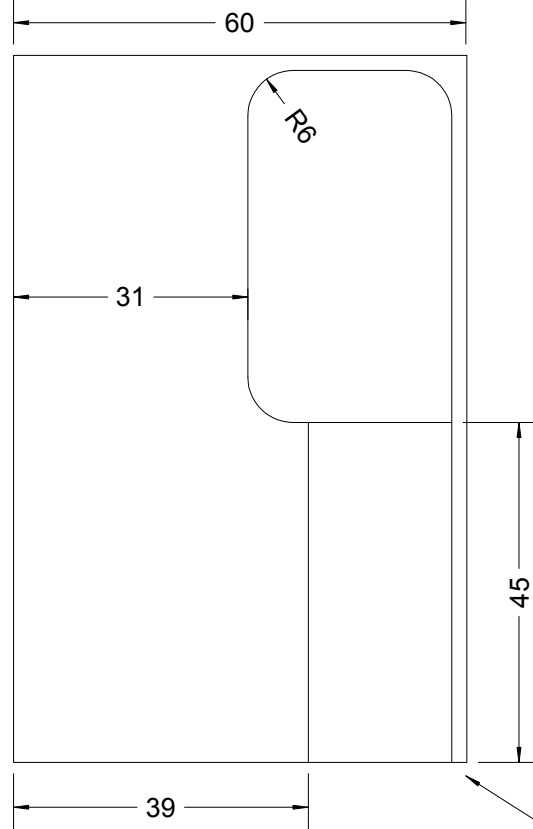
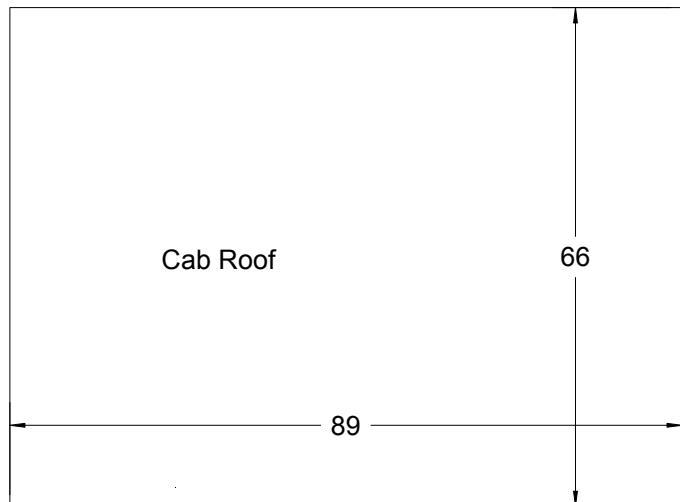


Closed cab based on locomotive Dorothea



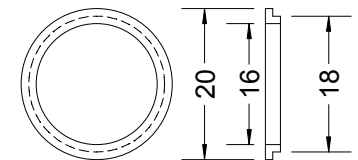
Cab rear



Add rivet detail if desired (see prototype photos)

2mm brass angle  
Cab side (1 off as shewn, 1 reversed)

Front, back, sides and roof from 0.5mm brass sheet  
Finish edge of cab opening with brass beading  
Handrail from 1.5mm rod  
Spectacles turned from brass



Spectacles (4 off)  
solder or glue in place.

Wild Rose III  
sheet 27a  
Alternative Closed Cab

Copyright Dave Watkins 11/6/2012