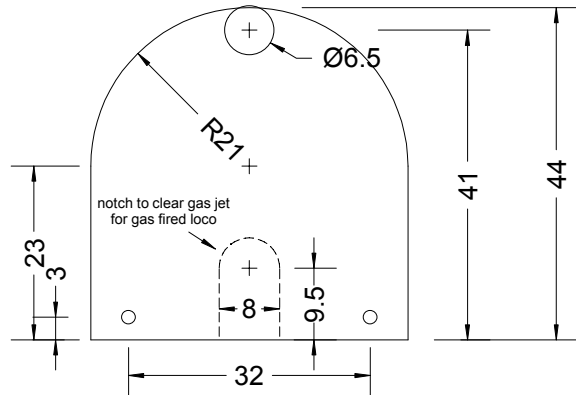
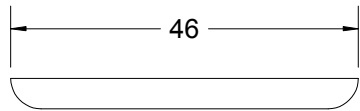
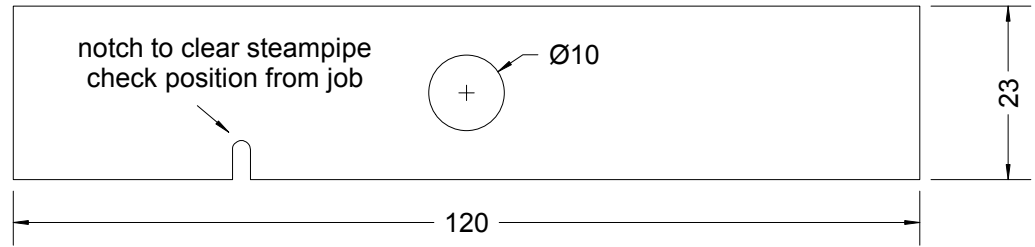


Dummy backhead 1mm brass

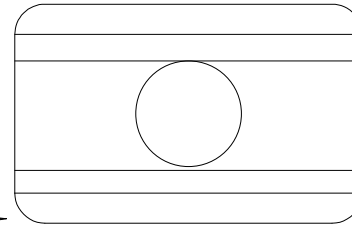


1.8mm holes for 10BA bolts to secure to footplate angle

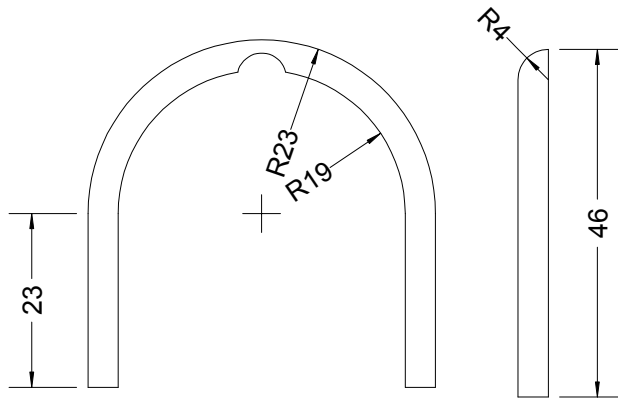
Cladding 0.5mm brass sheet, trim length to fit and soft solder to front bezel. Notch to clear steam pipe from regulator to lubricator.



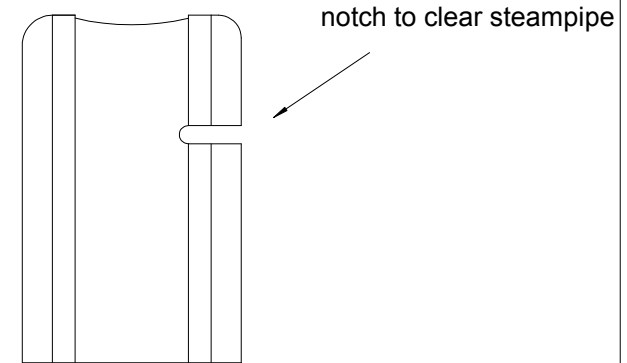
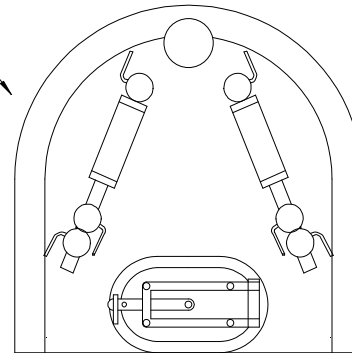
Solder front bezel to cladding, rear bezel to dummy backhead.



3.5mm wide thin brass strip represents securing bands



Brass bezel, flanged from 0.5mm brass and polished.



For a meths fired open cab engine representations of water gauges and fire door may be added

Wild Rose III
sheet 28a
More realistic dummy Firebox